

# Cascade



# Cascade Top

- The Cascade system is designed to provide an easy hanging system for our current range of lights. The smaller sizes of Coral, Floral, Kina, Kōura and Hinaki have been carefully grouped to maximize the effect of a cluster of lights.



Primary Material

Dimensions

Weight

Package Dimensions

Package Weight

Suspensions

Painted 10mm MDF

590mm (23")W x 590mm (23")L x 40mm (2")H

1.9kg (4.2lb)

620mm (24")W x 620mm (24")L x 70mm (3")H

Weight: 2.5kg (5.5lb)

4 x 5000mm stainless cable

# Models

**Coral Cluster**



**Floral Cluster**



**Hinaki Cluster**



**Koura Cluster**



**Kina Cluster**



**Hinaki Spiral**



**Koura Spiral**

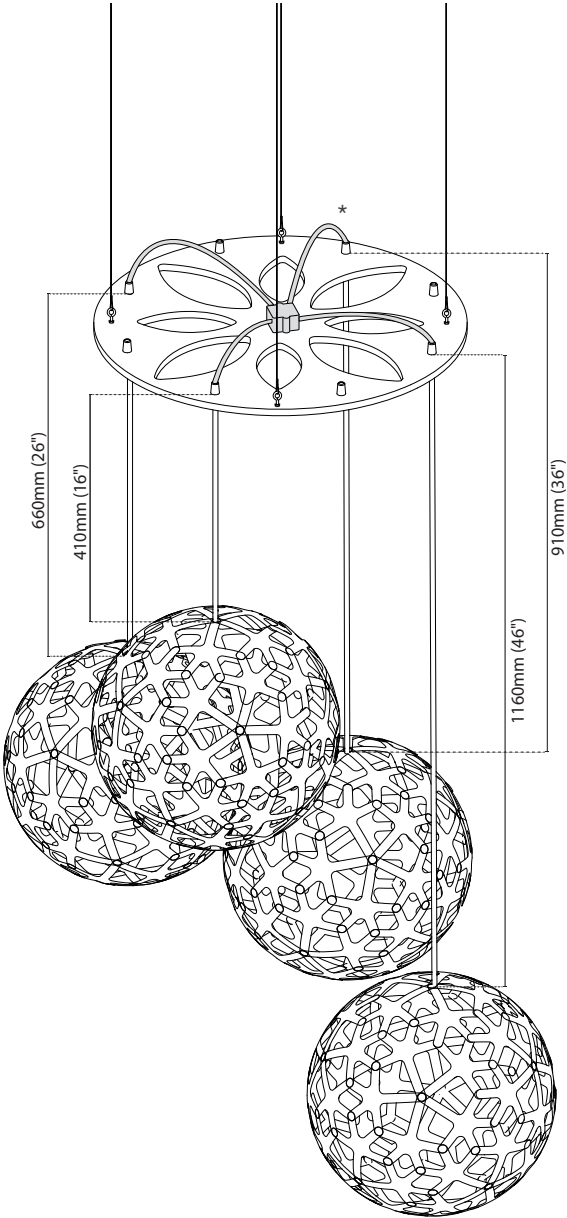


**Group Cluster**



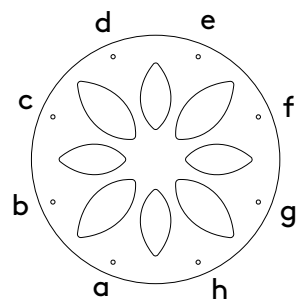


# Coral Cluster



\*Junction box not included

## Cascade key



## Cord Lengths

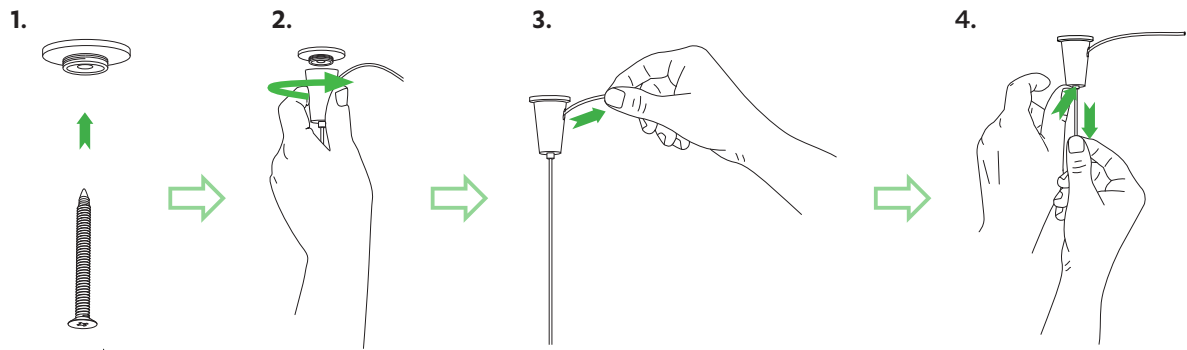
|    |              |
|----|--------------|
| a. | 410mm (16")  |
| c. | 660mm (26")  |
| e. | 910mm (36")  |
| g. | 1160mm (46") |

Lengths are from Cascade to the top of Corals. Please take into consideration the size of the light when measuring appropriate heights.

## Supplied Cord Length

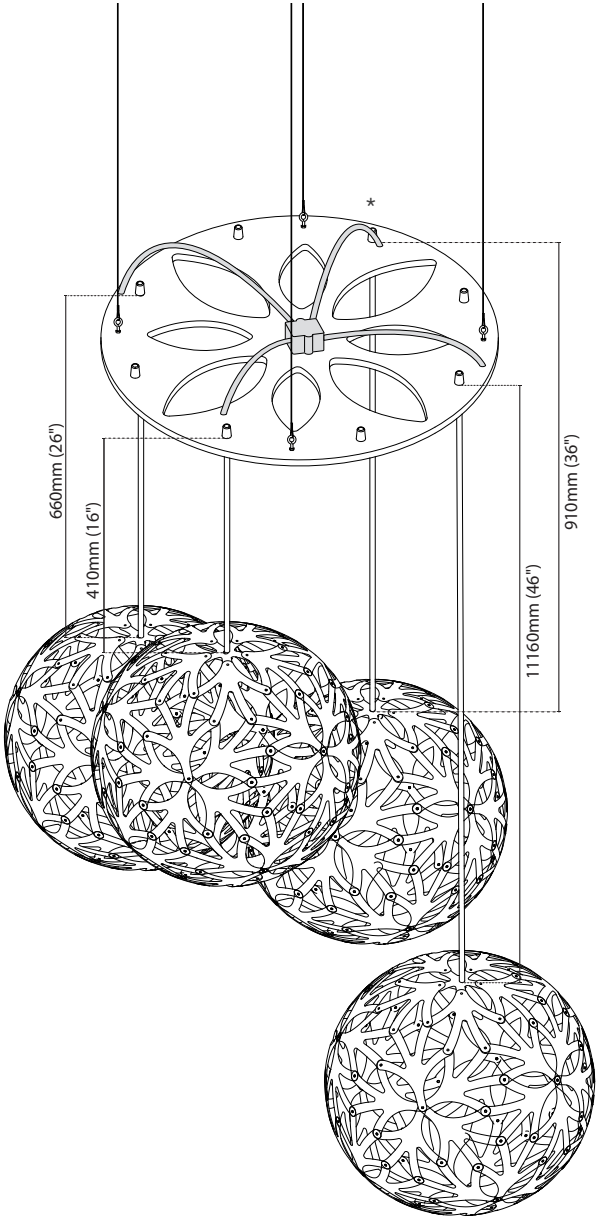
|   |               |
|---|---------------|
| 2 | 2000mm (79")  |
| 2 | 3000mm (118") |

## Grippler Installation



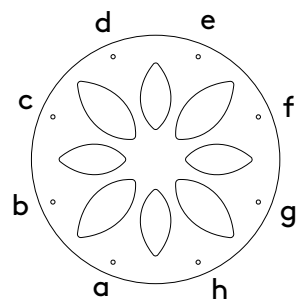


# Floral Cluster



\*Junction box not included

## Cascade key



## Cord Lengths

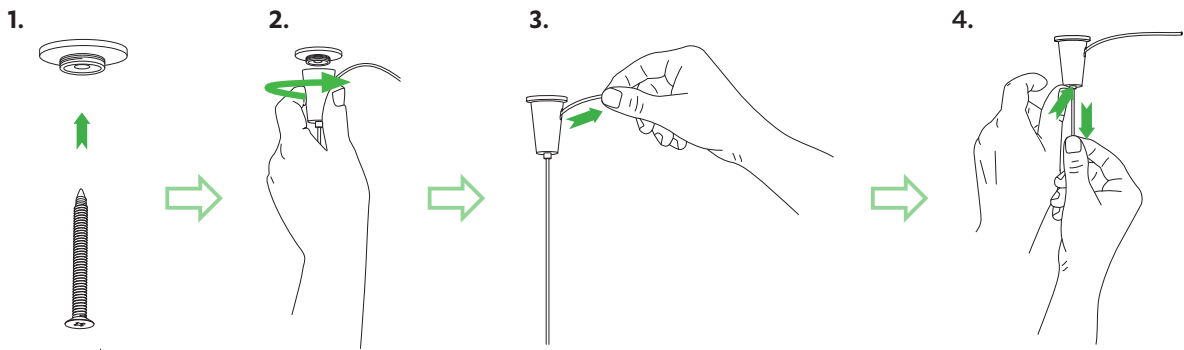
|    |              |
|----|--------------|
| a. | 410mm (16")  |
| c. | 660mm (26")  |
| e. | 910mm (36")  |
| g. | 1160mm (46") |

Lengths are from Cascade to the top of Florals. Please take into consideration the size of the light when measuring appropriate heights.

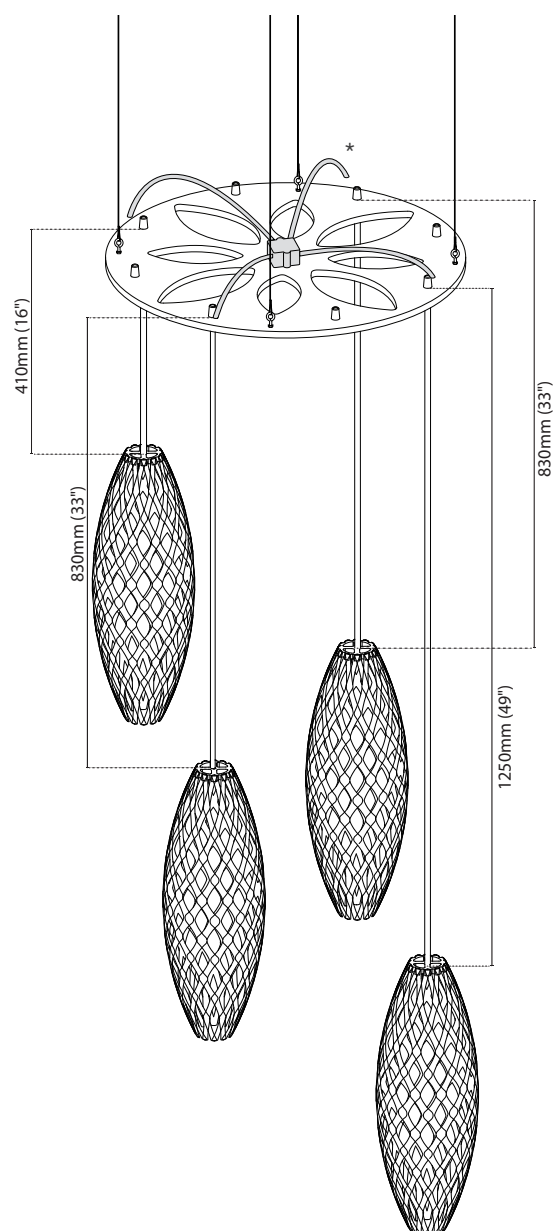
## Supplied Cord Length

|   |               |
|---|---------------|
| 2 | 2000mm (79")  |
| 2 | 3000mm (118") |

## Grippler Installation

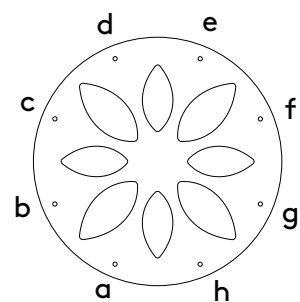


# Hinaki Cluster



\*Junction box not included

## Cascade key



## Cord Lengths

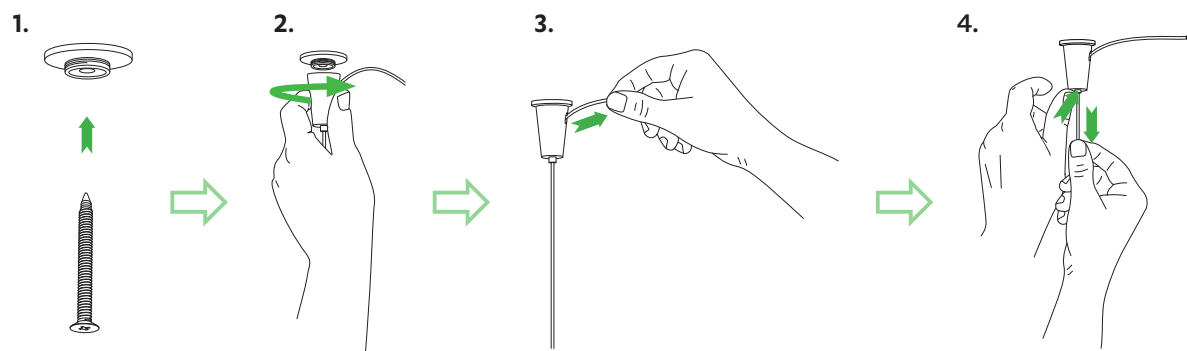
|    |              |
|----|--------------|
| a. | 830mm (33")  |
| c. | 410mm (16")  |
| e. | 830mm (33")  |
| g. | 1250mm (49") |

Lengths are from Cascade to the top of Hinakis. Please take into consideration the size of the light when measuring appropriate heights.

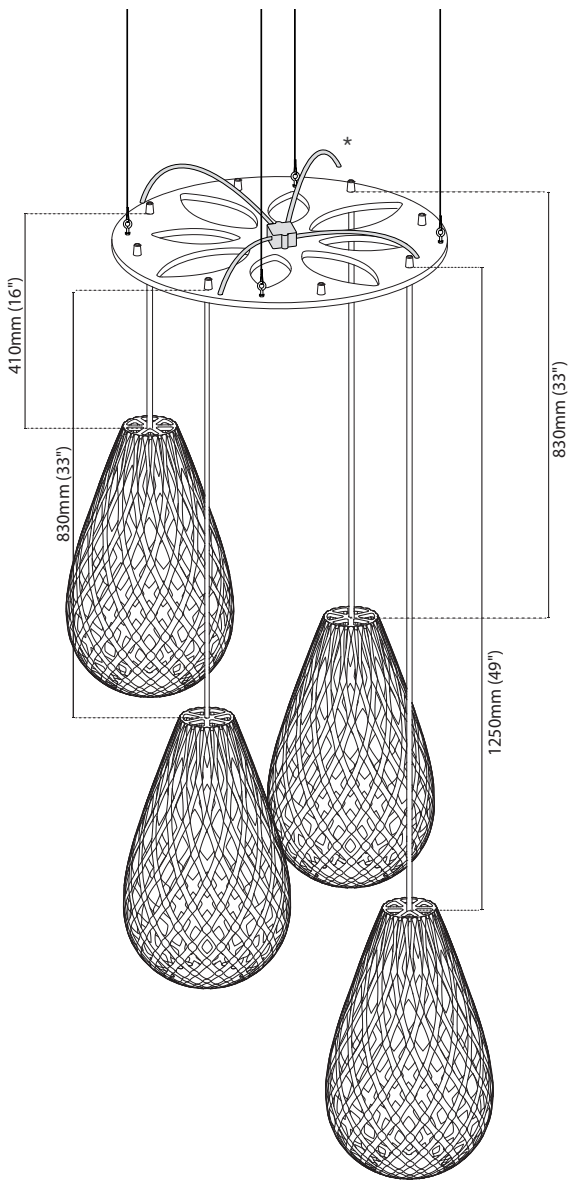
## Supplied Cord Length

|   |               |
|---|---------------|
| 1 | 2000mm (79")  |
| 3 | 3000mm (118") |

## Grippler Installation

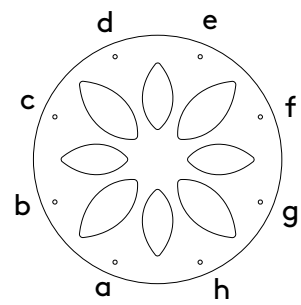


# Koura Cluster



\*Junction box not included

## Cascade key



## Cord Lengths

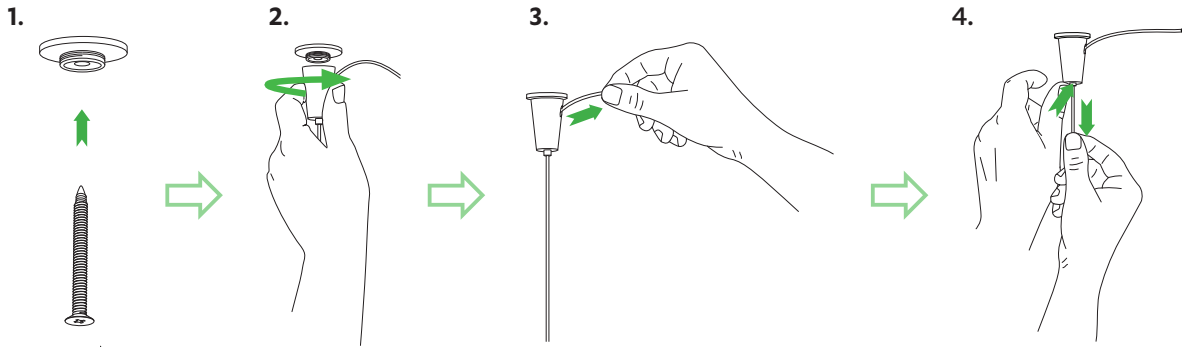
|    |              |
|----|--------------|
| a. | 830mm (33")  |
| c. | 410mm (16")  |
| e. | 830mm (33")  |
| g. | 1250mm (49") |

Lengths are from Cascade to the top of Kouras. Please take into consideration the size of the light when measuring appropriate heights.

## Supplied Cord Length

|   |               |
|---|---------------|
| 1 | 2000mm (79")  |
| 3 | 3000mm (118") |

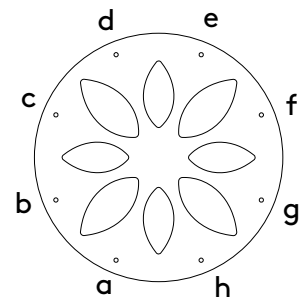
## Grippler Installation





# Kina Cluster

## Cascade key



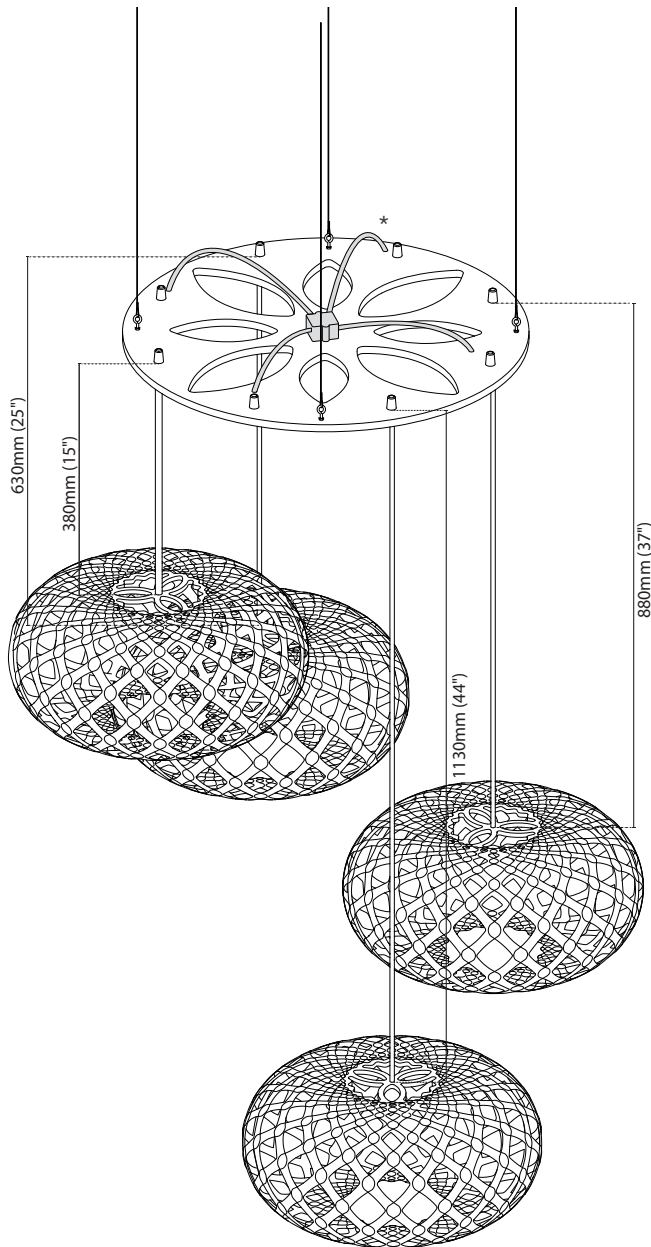
## Cord Lengths

|    |              |
|----|--------------|
| a. | 380mm (15")  |
| c. | 630mm (25")  |
| e. | 880mm (37")  |
| g. | 1130mm (44") |

Lengths are from Cascade to the top of Kinas. Please take into consideration the size of the light when measuring appropriate heights.

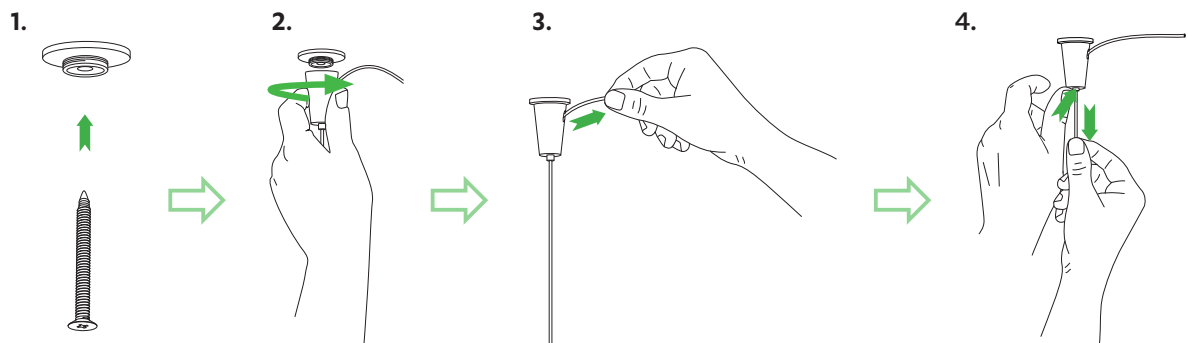
## Supplied Cord Length

|   |               |
|---|---------------|
| 2 | 2000mm (79")  |
| 2 | 3000mm (118") |

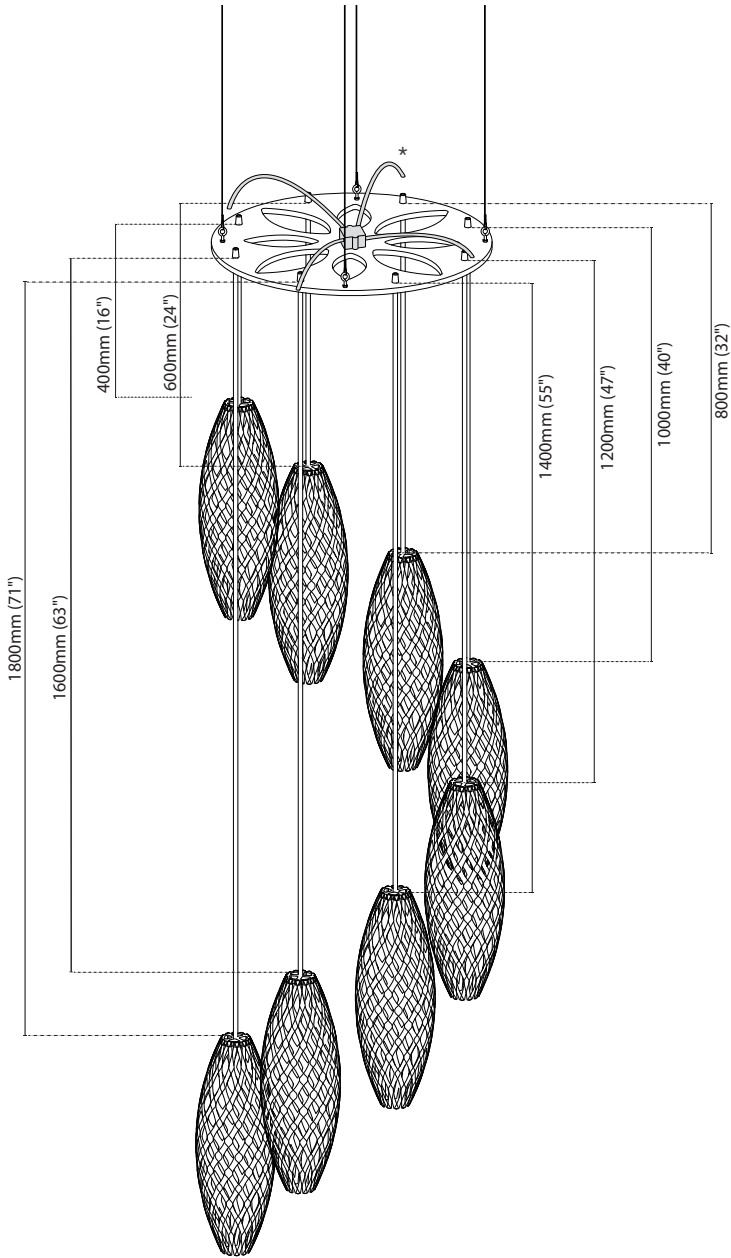


\*Junction box not included

## Grippler Installation

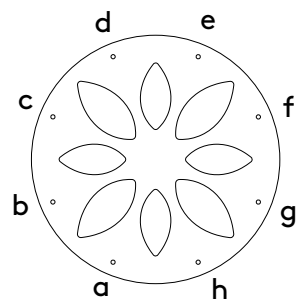


# Hinaki Spiral



\*Junction box not included

## Cascade key



## Cord Lengths

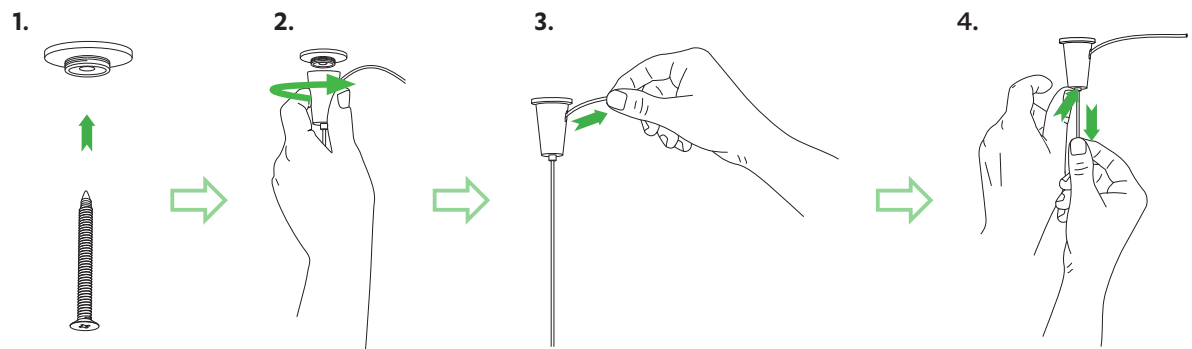
|    |              |
|----|--------------|
| a. | 400mm (16")  |
| b. | 600mm (24")  |
| c. | 800mm (32")  |
| d. | 1000mm (40") |
| e. | 1200mm (47") |
| f. | 1400mm (55") |
| g. | 1600mm (63") |
| h. | 1800mm (71") |

Lengths are from Cascade to the top of Hinakis. Please take into consideration the size of the light when measuring appropriate heights.

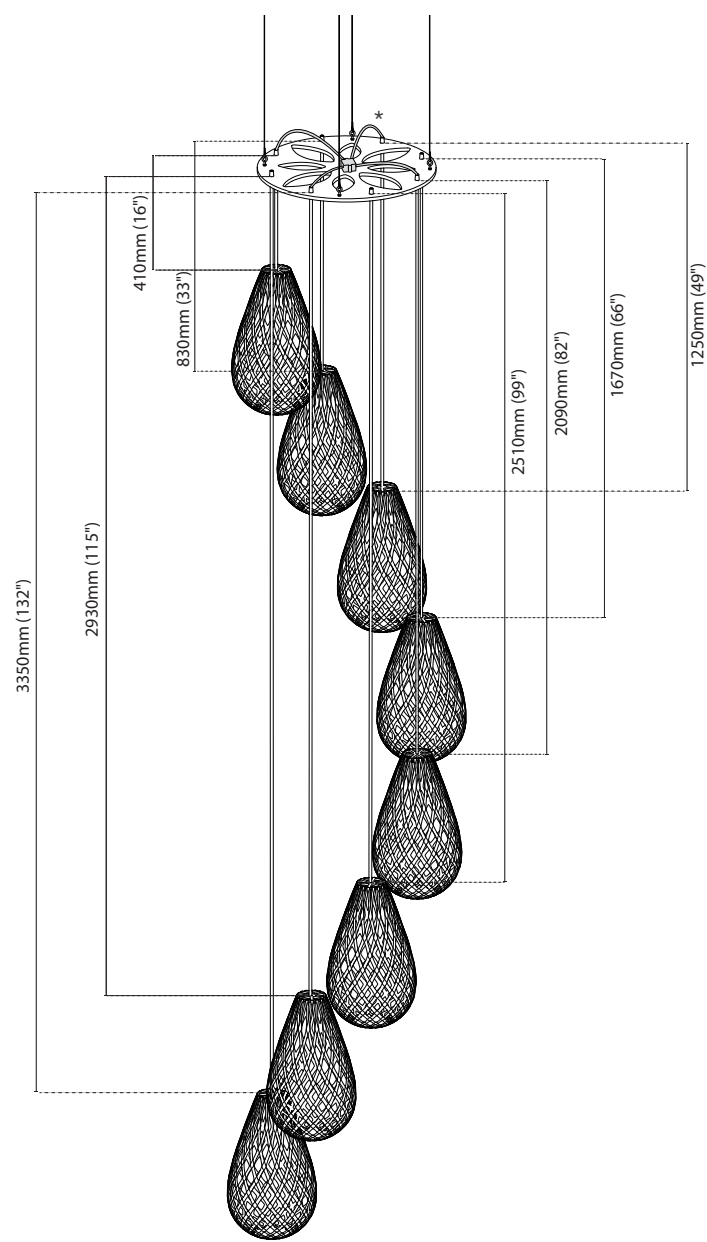
## Supplied Cord Length

|   |               |
|---|---------------|
| 2 | 2000mm (79")  |
| 4 | 3000mm (118") |
| 2 | 5000mm (197") |

## Grippler Installation

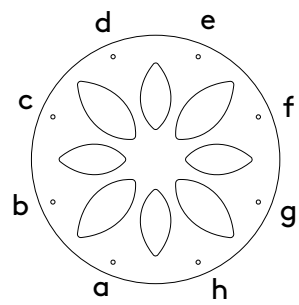


# Koura Spiral



\*Junction box not included

## Cascade key



## Cord Lengths

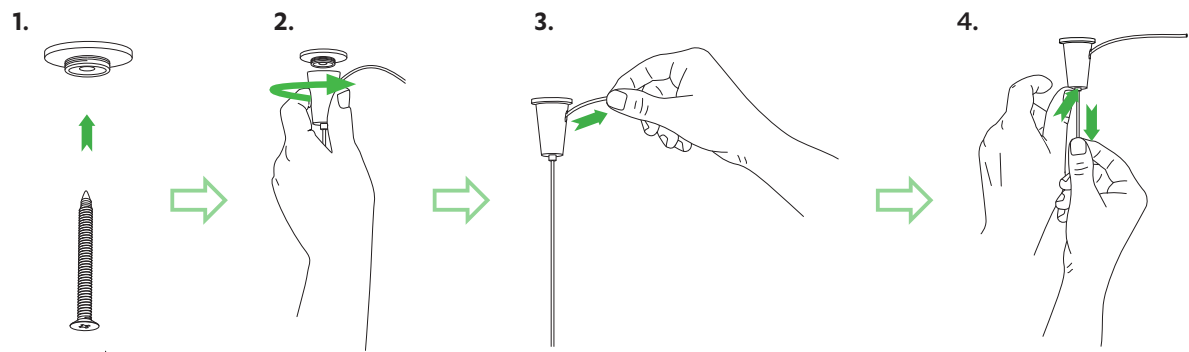
|    |               |
|----|---------------|
| a. | 410mm (16")   |
| b. | 830mm (33")   |
| c. | 1250mm (49")  |
| d. | 1670mm (66")  |
| e. | 2090mm (82")  |
| f. | 2510mm (99")  |
| g. | 2930mm (115") |
| h. | 3350mm (132") |

Lengths are from Cascade to the top of Kouras. Please take into consideration the size of the light when measuring appropriate heights.

## Supplied Cord Length

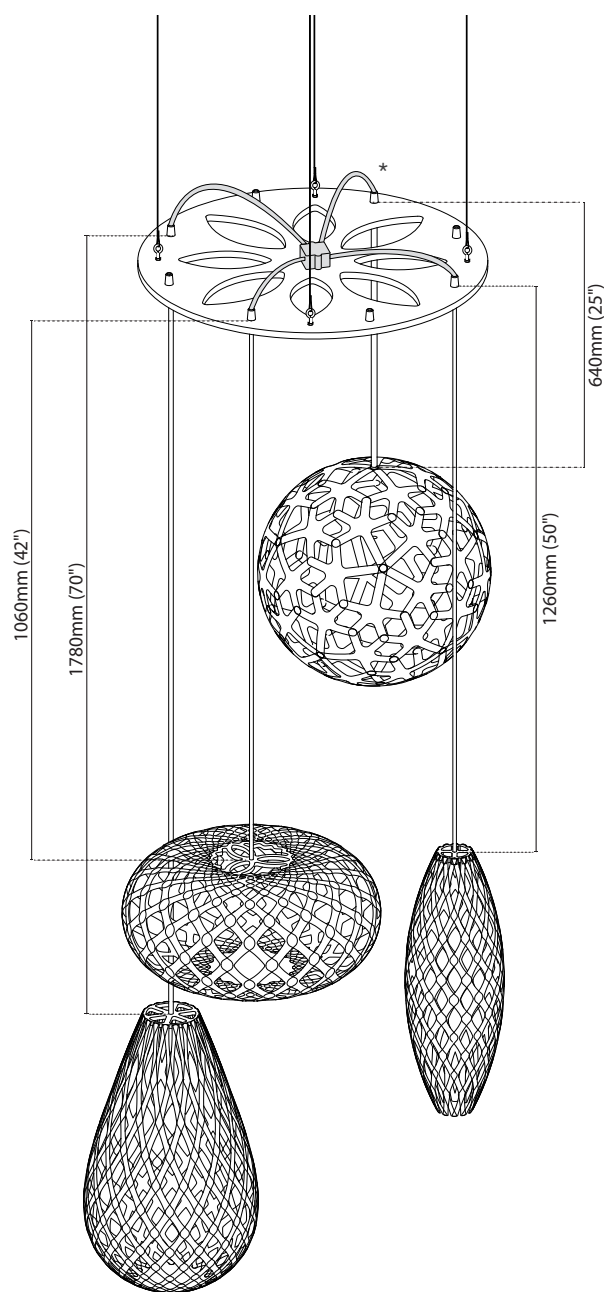
|   |               |
|---|---------------|
| 1 | 2000mm (79")  |
| 3 | 3000mm (118") |
| 4 | 5000mm (197") |

## Grippler Installation



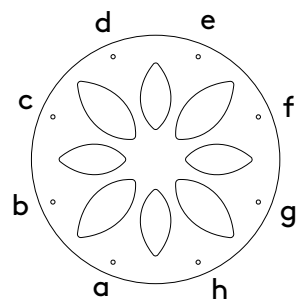


# Group Cluster



\*Junction box not included

## Cascade key



## Cord Lengths

|    |              |
|----|--------------|
| a. | 1060mm (42") |
| c. | 1780mm (70") |
| e. | 640mm (25")  |
| g. | 1260mm (50") |

Lengths are from Cascade to the top of the lights. Please take into consideration the size of the light when measuring appropriate heights.

## Supplied Cord Length

|   |               |
|---|---------------|
| 2 | 2000mm (79")  |
| 2 | 3000mm (118") |

## Grippler Installation

