

MAUI SOFT NOMA



MAUI



MAUI 1996

Design Vico Magistretti



2870

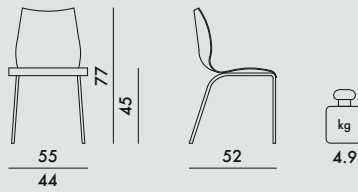
Chrome-plated structure

N2870

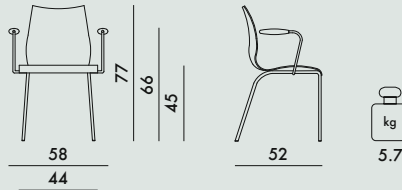
Black structure

2891

Self-extinguishing chair chrome-plated structure



2872

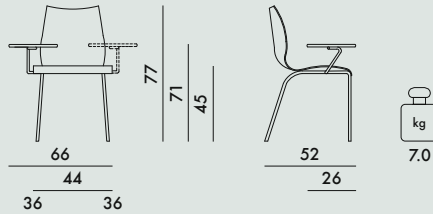


2874

Right tablet arm

2869

Left tablet arm

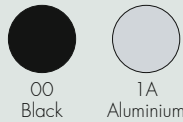


2875

Trolley for chairs

2873

Linking device

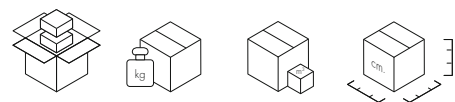


2870/N2870
2891



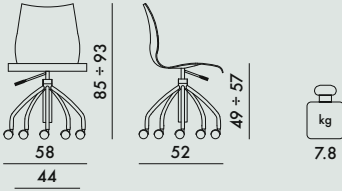
2872

| | |
|------------------------|-------------------|
| EN 1022:2005 | Compliant |
| EN 15373:2007 | Level achieved |
| 5.1 | Compliant |
| 5.2 | Compliant |
| Attachment A para. A.2 | (maximum level) 3 |
| EN 1728:2000 | Level achieved |
| 6.2.1 | (maximum level) 3 |
| 6.2.2 | (maximum level) 3 |
| 6.7 | (maximum level) 3 |
| 6.8 | (maximum level) 3 |
| 6.12 | (maximum level) 3 |
| 6.13 | (maximum level) 3 |
| 6.15 | (maximum level) 3 |
| 6.16 | (maximum level) 3 |

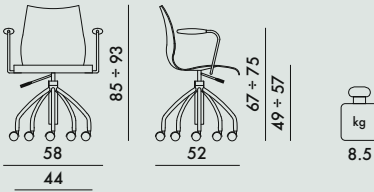


| Model | Quantity | Weight (kg) | Volume (cm³) | Dimensions (cm) |
|------------|----------|-------------|--------------|-----------------|
| 2870/N2870 | 2 | 12.0 | 0.302 | 59X58X90 |
| 2891 | 4 | 22.6 | 0.381 | 59X100X58 |
| 2872 | 2 | 14.3 | 0.302 | 58X58X90 |
| 2874 | 2 | 17.0 | 0.303 | 59X90X58 |
| 2869 | 2 | 17.0 | 0.303 | 59X90X58 |

2878
Swivel chair adjustable in height



2879
Swivel armchair adjustable in height



FRAME
Chrome-plated or painted steel

SHELL/ARMS
batch-dyed polypropylene

TABLET
Laminated stratified H.P.L.

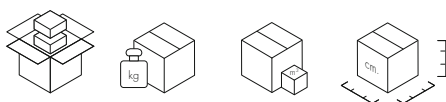
2870/N2870/2872/2874/2869/2878/2879



2891

2M Zinc white

Fire-resistant version
IT UNI 9177 fire reaction test,
class 1 ministerial certification
MI1848D30D100027



| | | | | |
|-------------|---|------|-------|----------|
| 2878 | 1 | 9.8 | 0.220 | 58X90X58 |
| 2879 | 1 | 11.0 | 0.256 | 57X84X52 |

| | |
|------------------------|-------------------|
| EN 1022:2005 | Compliant |
| EN 15373:2007 | Level achieved |
| 5.1 | Compliant |
| 5.2 | Compliant |
| Attachment A para. A.2 | (maximum level) 3 |
| EN 1728:2000 | Level achieved |
| 6.2.1 | (maximum level) 3 |
| 6.2.2 | (maximum level) 3 |
| 6.7 | (maximum level) 3 |
| 6.8 | (maximum level) 3 |
| 6.12 | (maximum level) 3 |
| 6.13 | (maximum level) 3 |
| 6.15 | (maximum level) 3 |
| 6.16 | (maximum level) 3 |

MAUI SOFT NOMA 2013

Tribute to Vico Magistretti



2895

Chrome-plated structure

N2895

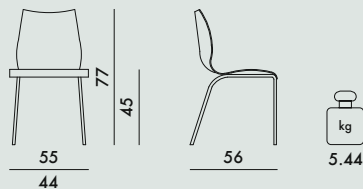
Black structure

T2895

Customer fabric chrome-plated structure

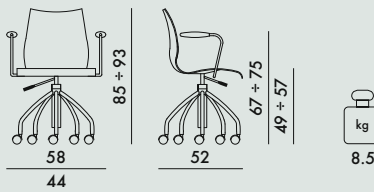
X2895

Customer fabric black structure



2897

Armchair on casters with gas lift pump



FRAME

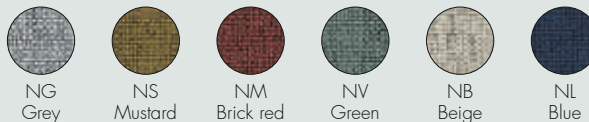
Chrome-plated or painted steel

SHELL

Fabric-covered nylon

COVER

New Noma fabric made of 50% recycled polyester



T2895/X2895



T
Customer
fabric

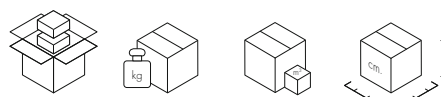
In order to better satisfy the needs of common areas, Maui Soft is also available in a personalised version with fabrics provided by the client, for orders of at least 4 items. Dimensions of customised fabric to cover a single piece: 140x125 cm.

Fire-resistant version

NOMA FABRIC IT UNI 9175, EN1021 fire reaction test, class 1 IM Ministerial approval MI1848D20D11M00028



| | |
|------------------------|-------------------|
| EN 1022:2005 | Compliant |
| EN 15373:2007 | Level achieved |
| Attachment A para. A.2 | (maximum level) 3 |
| EN 1728:2000 | Level achieved |
| 6.2.1 | (maximum level) 3 |
| 6.2.2 | (maximum level) 3 |
| 6.7 | (maximum level) 3 |
| 6.8 | (maximum level) 3 |
| 6.12 | (maximum level) 3 |
| 6.13 | (maximum level) 3 |
| 6.15 | (maximum level) 3 |
| 6.16 | (maximum level) 3 |



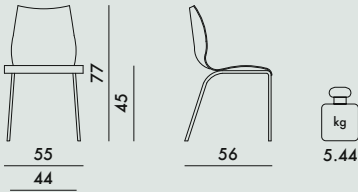
| | | | | |
|-------------------|---|------|-------|----------|
| 2895/N/T/X | 2 | 13.8 | 0.327 | 59X59X94 |
| 2897 | 1 | 11.6 | 0.255 | 57X52X86 |

MAUI SOFT TREVIRA 2013

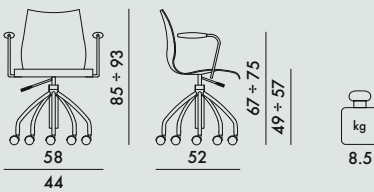
Tribute to Vico Magistretti

2895 Chrome-plated structure

N2895 Black structure



2897 Armchair on casters with gas lift pump



FRAME

Chrome-plated or painted steel

SHELL

Fabric-covered nylon

COVER

Trevira fabric



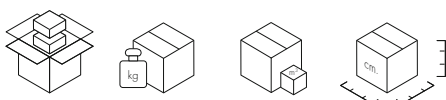
Fire-resistant version

TREVIRA FABRIC

IT UNI 9175, EN1021 fire reaction test,
class 1 IM ministerial certification M11848D20D11M00015

UK Standard BS5852 S5, BS 7176 Medium Hazard - S.I. 1324

US California Standard TB 117



| | | | | |
|---------------|---|------|-------|----------|
| 2895/N | 2 | 13.8 | 0.327 | 59X59X94 |
| 2897 | 1 | 11.6 | 0.255 | 57X52X86 |

| | |
|------------------------|-------------------|
| EN 1022:2005 | Compliant |
| EN 15373:2007 | Level achieved |
| Attachment A para. A.2 | (maximum level) 3 |
| EN 1728:2000 | Level achieved |
| 6.2.1 | (maximum level) 3 |
| 6.2.2 | (maximum level) 3 |
| 6.7 | (maximum level) 3 |
| 6.8 | (maximum level) 3 |
| 6.12 | (maximum level) 3 |
| 6.13 | (maximum level) 3 |
| 6.15 | (maximum level) 3 |
| 6.16 | (maximum level) 3 |

CLASSIC FABRICS

TREVIRA

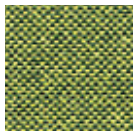
Audrey Soft/Maui Soft



G/GG
red



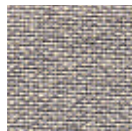
E/EE
orange



S/SS
acid green



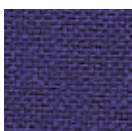
R/RR
teal



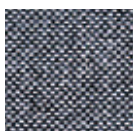
D/DD
beige



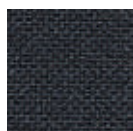
M/MM
brown



P/PP
blue



C/CC
grey



B/BB
black

Composition 100% PL Trevira

Martindale 65.000



NOMA new fabric made of 50% recycled polyester

Audrey Soft/Maui Soft



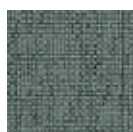
1/NG
grey



2/NS
mustard



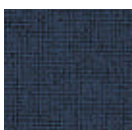
3/NM
ochre



4/NV
green



5/NB
beige



6/NL
blue

Composition 50% Recycled PL, 50% PL Trevira

Martindale 60.000



Highly usable and all-round design

Classic colours with a twist

Superior fire resistance

Good stretch properties

Prolongs furniture life

Strong environmental profile

No heavy metal

50% post-consumer recycled flame retardant polyester

STANDARD 100 by OEKO-TEX®

Meet Möbelfakta requirements