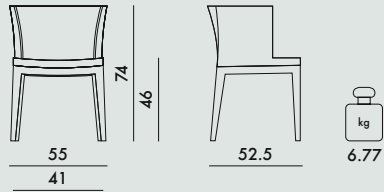


# MADemoISELLE 2012

Design Philippe Starck



## FRAME

Transparent or batch-dyed polycarbonate

## SEAT

Polyurethane foam with fabric upholstery

### 4895

Transparent frame

### 4896

Black frame

DAMASK



DV  
Green  
damask

BLACK&WHITE



PP  
Houndstooth



PN  
Black  
pattern



PB  
White  
pattern

In order to better satisfy the needs of common areas, Mademoiselle is also available in a personalised version with fabrics provided by the client, for orders of at least 4 items.

Dimensions of customised fabric to cover a single piece: 140x110 cm.

level achieved

EN 1728:2000

6.7	(maximum level) 5
6.12	(maximum level) 5
6.13	(maximum level) 5
6.15	(maximum level) 5
6.16	(maximum level) 5

**4895/4896**



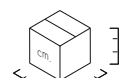
1  
1



5.3  
5.2



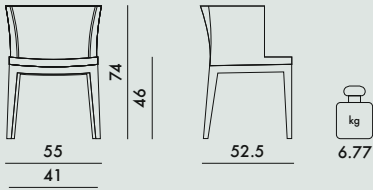
0.10  
0.12



55X36X54  
52X53X47

# MADEMOISELLE KRAVITZ 2013

Design Philippe Starck



## MATERIAL

Transparent or batch-dyed polycarbonate

## SEAT

Fabric covered polyurethane

### 4192

Black frame

### 4193

Transparent frame



07  
Faux-fur  
Snake print  
fabric



09  
Faux-fur  
Woven  
fabric

### 4392

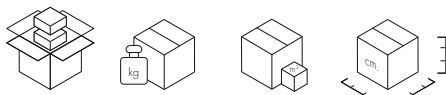
Black frame

### 4393

Transparent frame



81  
Raffia fabric  
Woven  
fabric

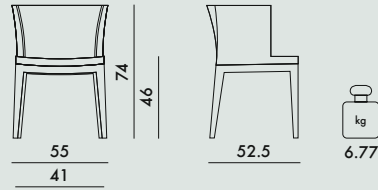


<b>4192/4193</b>	1	5.3	0.10	55X36X54
	1	5.2	0.12	52X53X47
<b>4392/4393</b>	1	5.3	0.10	55X36X54
	1	5.2	0.12	52X53X47

EN 1728:2000	level achieved
6.7	(maximum level) 5
6.12	(maximum level) 5
6.13	(maximum level) 5
6.15	(maximum level) 5
6.16	(maximum level) 5

# MADEMOISELLE "À LA MODE" MISSONI 2005

Design Philippe Starck



## FRAME

Transparent or batch-dyed polycarbonate

### 4892

Black frame

### 4893

Transparent frame

## SEAT

Fabric covered polyurethane

## FABRIC

MISSONI  
FABRICS



QQ  
Vevey  
red tones



ZZ  
Vevey  
burnt tones

level achieved

EN 1728:2000

6.7	(maximum level) 5
6.12	(maximum level) 5
6.13	(maximum level) 5
6.15	(maximum level) 5
6.16	(maximum level) 5

**4892/4893**



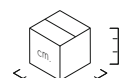
1  
1



5.3  
5.2



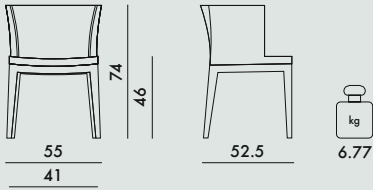
0.10  
0.12



55X36X54  
52X53X47

# MADEMOISELLE "À LA MODE" MOSCHINO 2005

Design Philippe Starck



## FRAME

Transparent or batch-dyed polycarbonate

### 4895

Transparent frame

### 4896

Black frame

## SEAT

Fabric covered polyurethane

## FABRIC

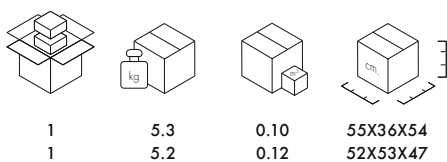
MOSCHINO  
FABRICS



FM  
Sketches



HN  
Black hearts



4895/4896

1  
1

5.3  
5.2

0.10  
0.12

55X36X54  
52X53X47

EN 1728:2000		level achieved
6.7	(maximum level) 5	
6.12	(maximum level) 5	
6.13	(maximum level) 5	
6.15	(maximum level) 5	
6.16	(maximum level) 5	

# TREND FABRICS

## KRAVITZ

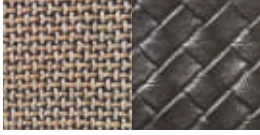
### Mademoiselle Kravitz



07  
faux-fur - snake print fabric



09  
faux-fur - woven fabric



81  
raffia fabric - woven fabric

#### 07 faux-fur - snake print fabric

**Composition** 100% MA - 62% VI, 30% CO, 8% PL

#### 09 faux-fur - woven fabric

**Composition** 100% MA - 42% VI, 40% CO, 18% WO

#### 81 raffia fabric - woven fabric

**Composition** 100% PVC - 42% VI, 40% CO, 18% WO

## SANDERSON

### Clap/Cushions



J/V1  
chelsea



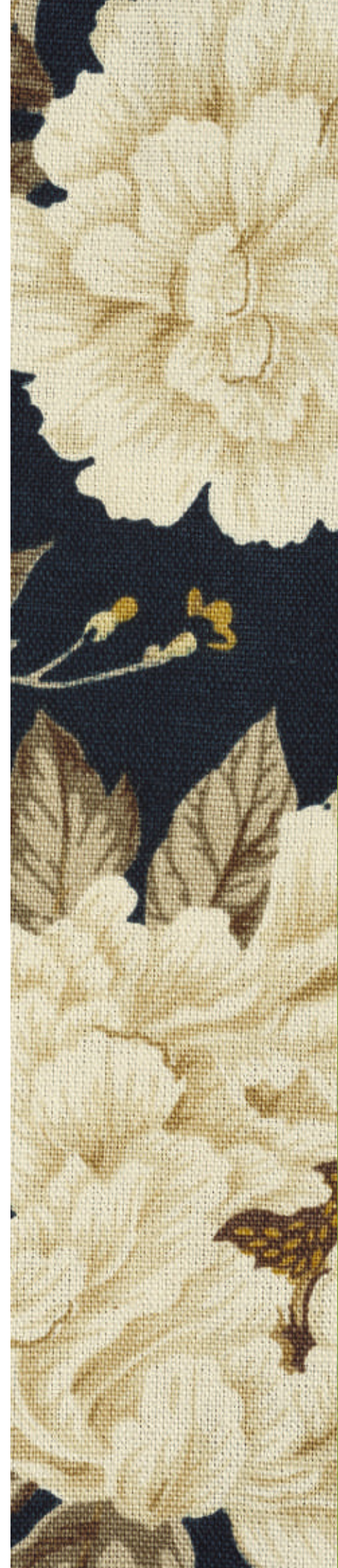
I/V2  
peony



K/V3  
kew

**Composition** 60% LI, 30% CO, 10% NY

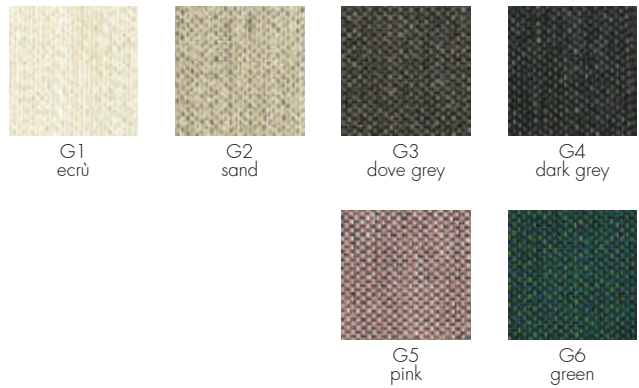
**Martindale** 40.000



# TREND FABRICS

## MATCH

### Largo/Plastics Duo/Cushions



Composition 48% CO, 15% VI, 7% LI, 30% PL

Martindale 52.000



## VELVET

### Largo/Foliage/Cushions



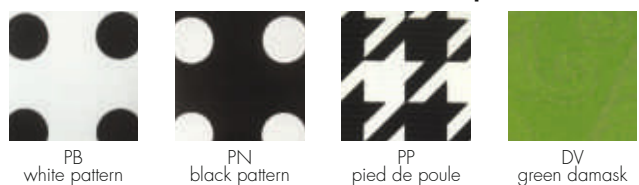
Composition 100% PL

Martindale 100.000



## PATTERN

### Mademoiselle/Pop/Cushions



DV

Composition 100% CO/PL

PB - PN - PP

Composition 100% CO