



Hīnaki



Hīnaki

Hīnaki was David's first exploration into lighting in 1995 when he made a prototype based on fish traps which are called hīnaki by Māori. Hīnaki traps were made from woven vines, some in amazingly beautiful forms.

Hīnaki comes in 3 sizes; 500mm tall, 900mm tall and 1400mm tall. The plywood finish can be either raw bamboo or painted, offering a range of options.



Features

Shipped Kitset

Seed System kitset lightshades are on average 1/30th of the volume of the assembled light. This aims to help minimize the effects of shipping and to reduce the design's environmental footprint.

Warranty

This light is warranted for three years from date of purchase for failure of parts.

Care Instructions

All lights are intended for use in dry interior conditions only and can be cleaned with a soft cloth dampened slightly in warm water when the light is switched off. Do not use detergents.

EPD Certified

An EPD is a standardised and verified way of quantifying the environmental impacts of a product, based on a consistent set of rules that have been developed through a stakeholder consultation process.



Compliance



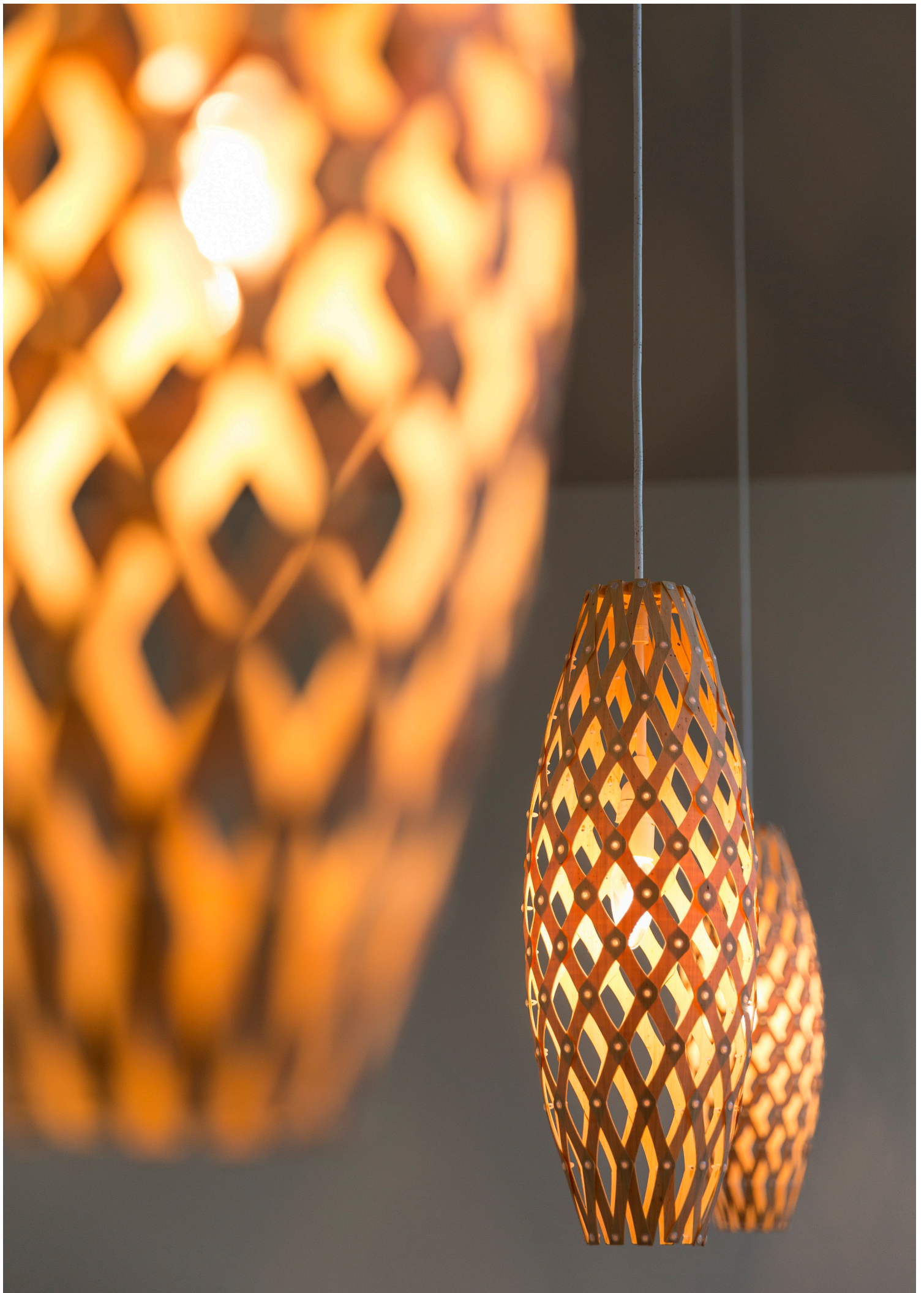
CE



AS/NZS

(Declarations of conformity available on request).





Technical Data



500mm / 20"



900mm / 35"



1400mm / 55"

	Dimensions	Cordset*	Material	Fasteners	Suspension	Packaging
	Width: 170mm / 7" Height: 500mm / 20" Weight: 0.3kg / 0.66lb	2m / 6.5ft	Bamboo plywood (Sourced from FSC accredited factory)	Nylon	Hangs on cord	565mm x 185mm x 70mm 22" x 7" x 3" 0.007m / 0.3ft 0.9kg / 2lb
	Width: 320mm / 13" Height: 900mm / 35" Weight: 0.7kg / 1.54lb	2m / 6.5ft	Bamboo plywood (Sourced from FSC accredited factory)	Nylon	Hangs on cord	530mm x 210mm x 100mm 21" x 8" x 4" 0.011m / 0.393ft 1.3kg / 2.87lb
	Width: 500mm / 20" Height: 1400mm / 55" Weight: 3.8kg / 8.37lb	5m / 16.4ft	Bamboo plywood (Sourced from FSC accredited factory)	Nylon	3 x Suspension Wires	790mm x 270mm x 200mm 31" x 11" x 8" 0.043m / 1.5ft 4.5kg / 9.9lb

*Black comes with black cordset and fasteners. All others come with white cordset and white fasteners. Custom lengths available on request.

Finishes

We offer 12 stock finish options for Hinaki. We use low VOC acrylic paint and it is most commonly used on the interior of the light. We can also produce lights in other finishes or colours by special order. All lights are made from sustainably grown bamboo plywood sourced from an FSC accredited factory.



Raw Finish

Bamboo



Painted 2 Sides

Black



White



Painted 1 Side

Blue



Aqua



Lime



Orange



Pink



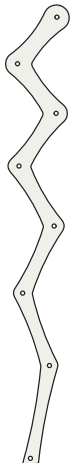
Red



Black



White



*Finishes apply to all Hinaki sizes



Bamboo

Aqua

Lime



Red

Orange

Blue



Pink

Black 1 Side (Outside)

Black 1 Side (Inside)

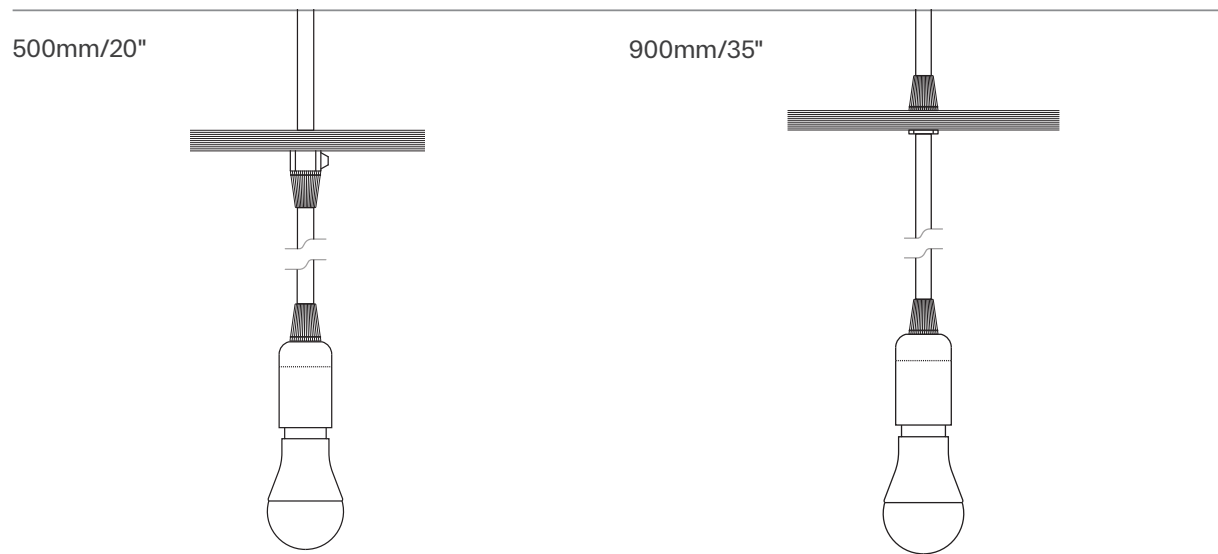


Black 2 Sides

White 1 Side

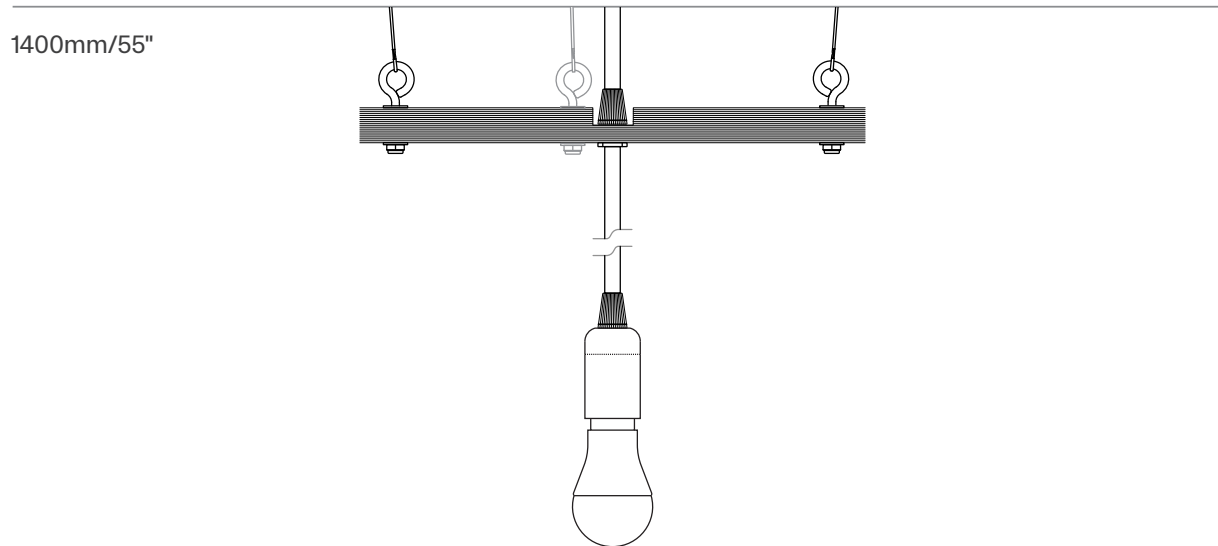
White 2 Sides

Electrics



North America: E26,
Max 60 Watts 120v AC
60hz
Rest of World: E14,
Max 60 Watts
230-240v AC 50hz

North America: E26,
Max 60 Watts 120v
AC 60hz
Rest of World: E27,
Max 60 Watts
230-240v AC 50hz

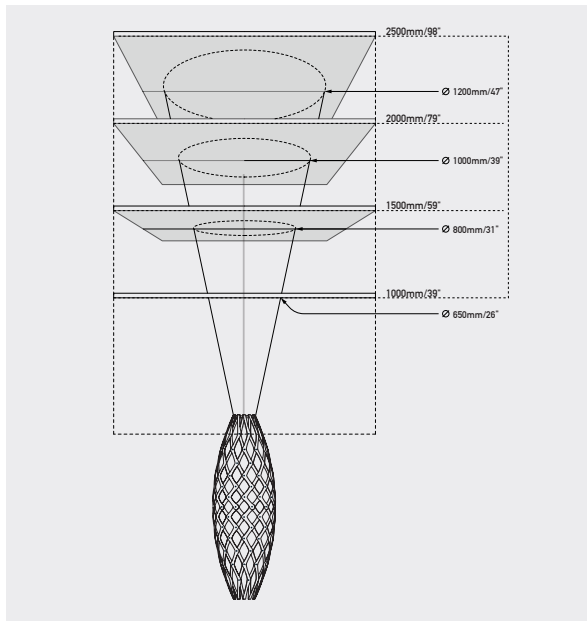
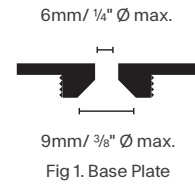


North America: E26,
Max 60 Watts 120v AC
60hz
Rest of World: E27,
Max 60 Watts
230-240v AC 50hz

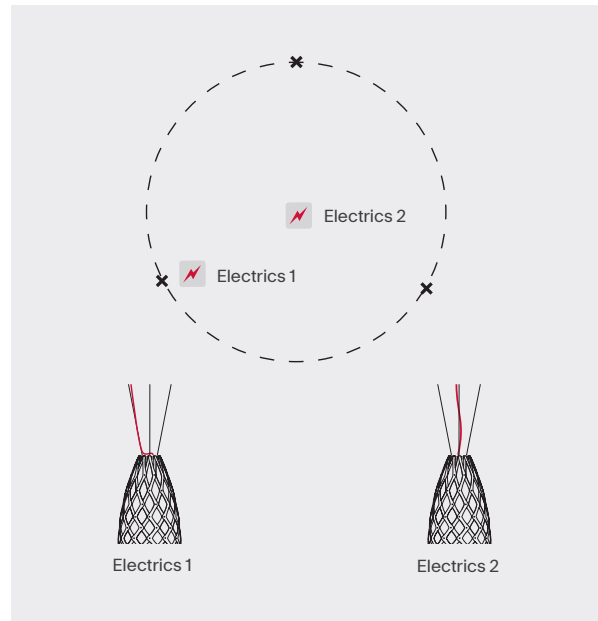
Installation

1400mm/55"

Fixings for cone gripper (fixing screws NOT SUPPLIED).
 Note: Choose appropriate hardware to attach base plate (Fig.1) to ceiling substrate.



Options

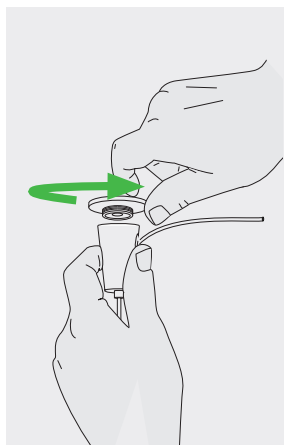


Step 1.

Decide upon hanging distance. Use the schematic diagram as a guide to pick a circle radius to be marked out on ceiling. This circle can be marked with a length of timber or string.

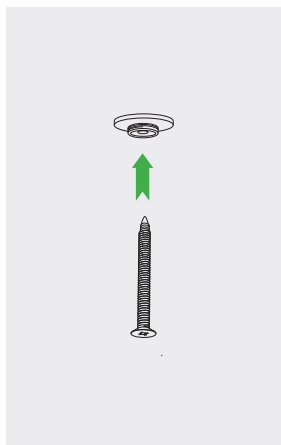
Step 2.

Mark 3 hanging points where your cone grippers will be located. You can either centrally locate the ceiling canopy or run the electric cord up one of the suspension wires.



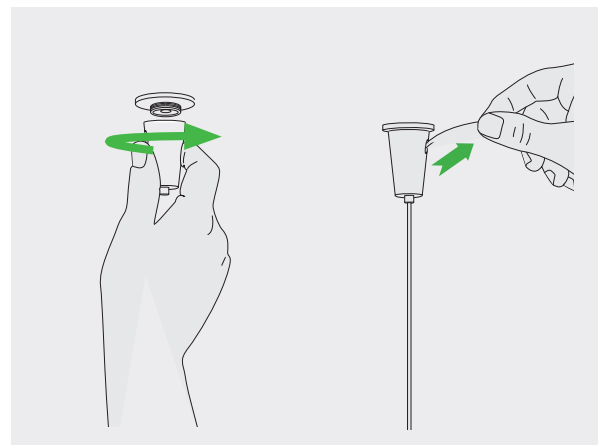
Step 1.

Unscrew baseplate.



Step 2.

Use appropriate fixing screw to mount base plate (Fig.1).



Step 3.

Remove cable from cone. Screw cone back onto baseplate. Re-insert cable and level light. Once desired position is set, trim excess cable.