

ALEDIN TEC MAT



AUDREY



AUDREY 2012

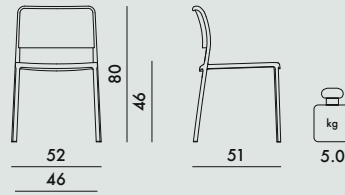
Design Piero Lissoni



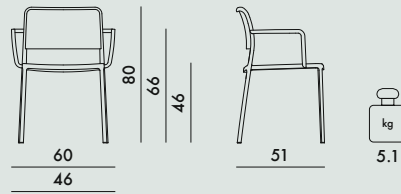
Good Design Award 2012 **reddot design award**
winner 2013



5875



5876



FRAME

Painted aluminium

SEAT AND BACK

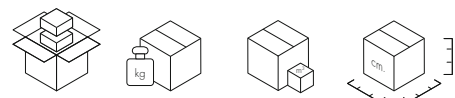
Batch-dyed modified polypropylene



level achieved
without arms

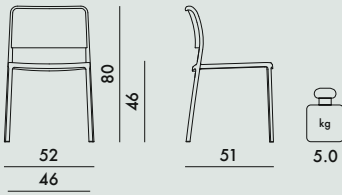
EN 16139.2013
EN 1022 2005
EN 1728.2012

6.4	(maximum level) L2
6.5	(maximum level) L2
6.6	(maximum level) L2
6.15	(maximum level) L2
6.16	(maximum level) L2
6.17	(maximum level) L2
6.18	(maximum level) L2
6.24	(maximum level) L2
6.25	(maximum level) L2

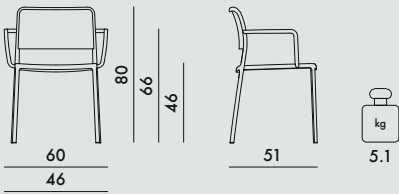


5875	2	13.2	0.279	57X86X57
5876	2	14.8	0.304	57X86X62

5877



5878



INDOOR FRAME

Polished aluminium

SEAT AND BACK

Batch-dyed modified polypropylene



L1
Aluminium
White



L2
Aluminium
Black



L3
Aluminium
Light grey



L4
Aluminium
Sand



L5
Aluminium
Orange



L6
Aluminium
Yellow



L7
Aluminium
Blue



Audrey in the polished version can be used only indoors; for minimum orders of 50 pieces, there is also the polished aluminium version with a protective coating of paint that can be used outdoors as well.



5877

2

13.2

0.279

57X86X57

5878

2

14.8

0.304

57X86X62

level reached

with arms

Compliant

Compliant

EN 15373:2007

EN 1022 2005

EN 1728.2000

6.2.1 (maximum level) 3

6.2.2 (maximum level) 3

6.5 (maximum level) 3

6.6 (maximum level) 3

6.7 (maximum level) 3

6.8 (maximum level) 3

6.10 (maximum level) 3

6.12 (maximum level) 3

6.13 (maximum level) 3

6.15 (maximum level) 3

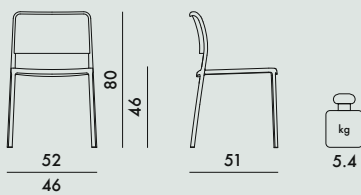
6.16 (maximum level) 3

6.17 (maximum level) 3

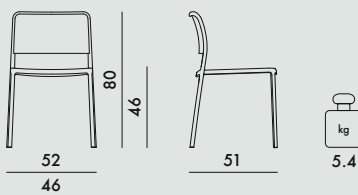
AUDREY SOFT 2012

Design Piero Lissoni

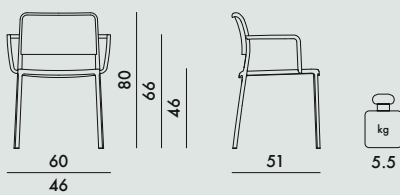
5975 



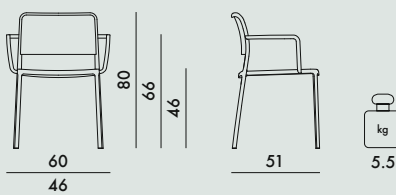
5977 



5976 

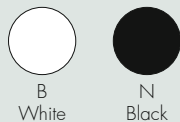


5978 



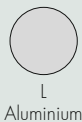
FRAME

Painted aluminium



FRAME

Polished aluminium



SEAT AND BACK

Polyurethane

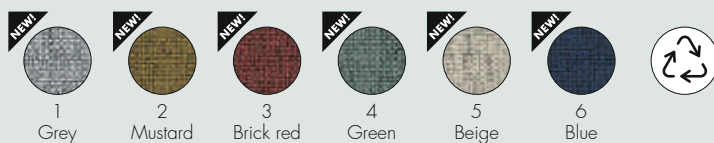
UPHOLSTERY

Trevira fabric



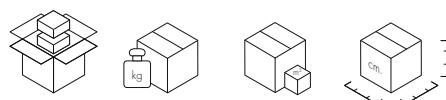
UPHOLSTERY

New Noma fabric made of 50% recycled polyester



	Level achieved	
	with arms	without arms
EN 1022:2005	Compliant	Compliant
EN 15373:2007		
5.1	Compliant	Compliant
5.2	Compliant	Compliant
Attachment A para. A.2	3	3
EN 1728:2000		
6.2.1	3	3
6.2.2	3	3
6.5	3	-
6.6	3	-
6.7	3	3
6.8	3	3
6.10	3	-
6.12	3	3
6.13	3	3
6.15	3	3
6.16	3	3
6.17	3	-

maximum level=3



5975/5977	2	14.6	0.286	57X88X57
5976/5978	2	16.6	0.311	57X88X62

5879

Stacking support

Audrey Soft is the fabric version of this chair. If required, a support accessory is also available, enabling the chairs to be stacked without damaging the upholstery.



BB
White



NN
Black



Fire tested version

IT UNI 9175, EN1021 fire reaction test class 1 IM ministerial certification
MI1848D20D11M00012

UK Standard, BS 7176 Medium Hazard - S.I. 1324

US - California Standard TB 117

NOMA FABRIC IT UNI 9175, EN1021 fire reaction test,
class 1 IM. Ministerial approval pending



CLASSIC FABRICS

TREVIRA

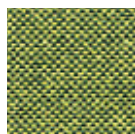
Audrey Soft/Maui Soft



G/GG
red



E/EE
orange



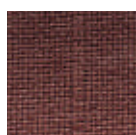
S/SS
acid green



R/RR
teal



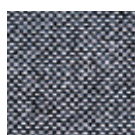
D/DD
beige



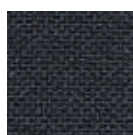
M/MM
brown



P/PP
blue



C/CC
grey



B/BB
black

Composition 100% PL Trevira

Martindale 65.000



NOMA new fabric made of 50% recycled polyester

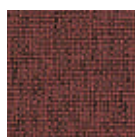
Audrey Soft/Maui Soft



1/NG
grey



2/NS
mustard



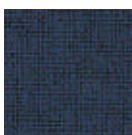
3/NM
ochre



4/NV
green



5/NB
beige



6/NL
blue

Composition 50% Recycled PL, 50% PL Trevira

Martindale 60.000



Highly usable and all-round design

Classic colours with a twist

Superior fire resistance

Good stretch properties

Prolongs furniture life

Strong environmental profile

No heavy metal

50% post-consumer recycled flame retardant polyester

STANDARD 100 by OEKO-TEX®

Meet Möbelfakta requirements